



Town Hall e-Meeting

Wednesday, September 21, 2022

3pm Eastern | 2pm Central

Welcome!

Agenda

1. Welcome
2. Current Initiatives & Future Expectations
3. Proposed Scholars Trust Governance Structure
4. Rosemont Alliance Update
5. Open Mic/Announcements



Current Initiatives &
Future Expectations

Current Initiatives

- **Growth in committed titles**
 - **WRLC Single Copy Periodical project completed**
4400+ new titles
 - **JRNL Oversight Committee** – Pilot project to open access to libraries/systems outside of the participating programs (BTAA, EAST, FLARE, Scholars Trust, and WEST) to offer to fill gaps
 - **Rosemont Alliance Last Known Copy Project** – 19 ASERL libraries, holding approximately 24,230 titles identified for the project
For title list information: <https://bit.ly/3dp3oUR>

19 ASERL Libraries in LKC

1. Duke University, 3197
2. East Carolina University, 206
3. Emory University, 2708
4. Georgia State University, 1036
5. Johns Hopkins, 203
6. Louisiana State University, 1265
7. Mississippi State University, 617
8. North Carolina State University, 870
9. Tulane University, 535
10. UNC-Chapel Hill, 790
11. UNC-Charlotte, 3004
12. University of Florida, 402
13. University of Georgia, 6232
14. University of Kentucky, 17
15. University of South Carolina, 1526
16. University of Tennessee, 376
17. University of Virginia, 506
18. Virginia Tech, 605
19. Wake Forest University, 138

Total: 24,233 titles

In JRNL: 737 titles

OCLC Shared Print Registration

Making shared print commitments visible in OCLC systems/services

Self Registering	Agent Registration/CRL	Agent Registration - Cont.	TBD
1. Auburn	1. East Carolina	11. U-Memphis – in process	1. Clemson
2. Duke	2. Florida International	12. U-Mississippi - submitted	2. Florida State
3. Emory	3. Georgia State	13. UNC- Chapel Hill – in process	3. Georgia Tech
4. U-Alabama	4. Johns Hopkins	14. UNC- Charlotte - submitted	4. Ms State
5. U-Louisville	5. Louisiana State – submitted	15. U-Tennessee – in process	5. U-South Carolina
6. UNC – Greensboro	6. NC State	16. U-Virginia	6. Virginia Commonwealth
7. Vanderbilt	7. Tulane – in process	17. VaTech	7. Nat’l Agriculture Library
	8. U-Florida	18. Wake Forest - submitted	
	9. U-Georgia	19. William & Mary	
	10. U-Kentucky		

OCLC Documentation: https://help.oclc.org/Metadata_Services/Shared_Print

* Add a SP commitment to a LHR: <https://bit.ly/3qLkBL0>

Where do we see Scholars Trust in the next 3 years?

“Crockpot Mode”

Maintenance with adjustments as needed

No expectation for significant growth in the collection

- ASERL - Last Known Copy, Data Integrity, Registration
- FLARE – Data Integrity, Registration
- WRLC – Single copy project (represents last materials to be retained - with limited possibilities for on-campus collections)

Opportunities for Collaborative Outreach - Training, Best Practices Guidance

- Collection Management (withdrawal/weeding, decision support tools, etc.)
- Access (Resource sharing, statistical data collection capabilities for shared print)
- Gap-filling (Approaches, supporting policies/best practices)

Potential merger between Rosemont and the Partnership for Shared Books



Proposed Governance Structure

Scholars Trust Governance

Approved by ASERL's Board of Directors & WRLC's Library Directors Council -- August 2015

Scholars Trust has been governed through a two-tiered structure to foster the growth of the partnership, create strategic directions, and provide support and management for long-term, efficient and effective operations

Scholars Trust Governance

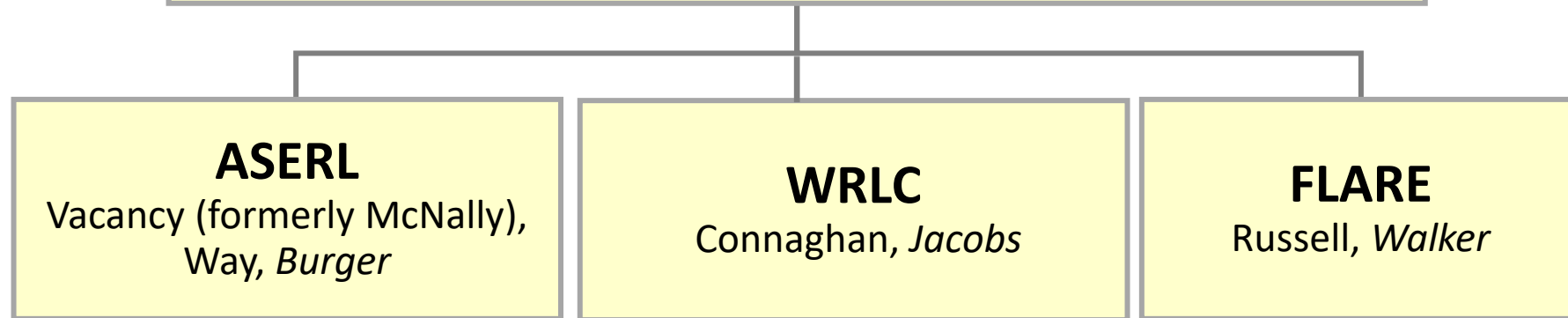
Executive:

The **Scholars Trust Governing Council** has had responsibility for developing the overall strategy for Scholars Trust and ensuring it has resources needed to achieve those goals

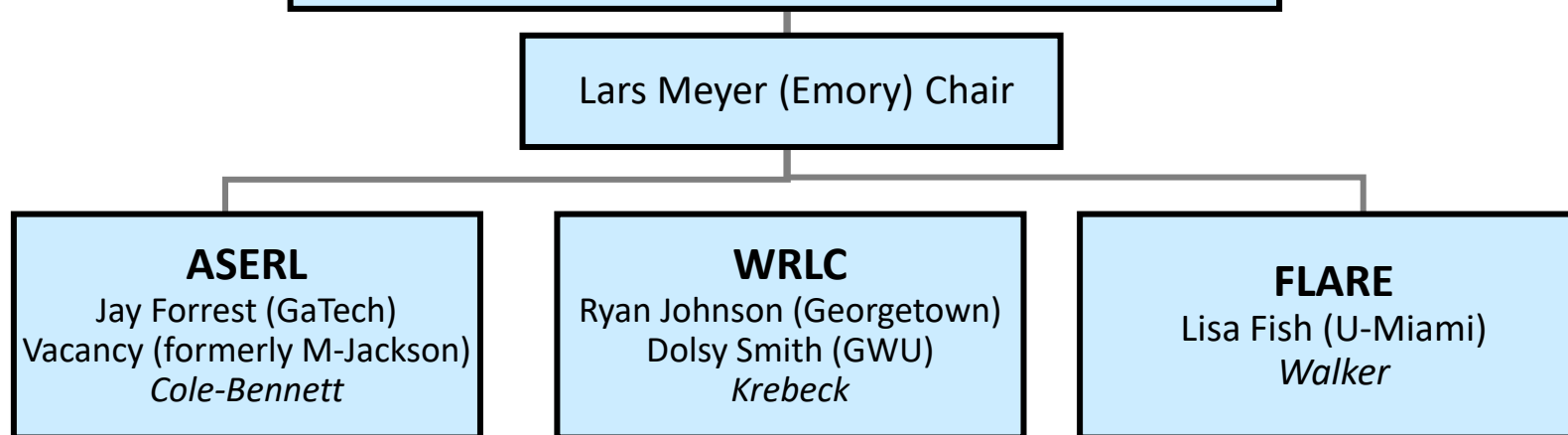
Operational:

The **Scholars Trust Steering Committee** has managed and overseen the initiatives, activities and operations set by the Scholars Trust Governing Council

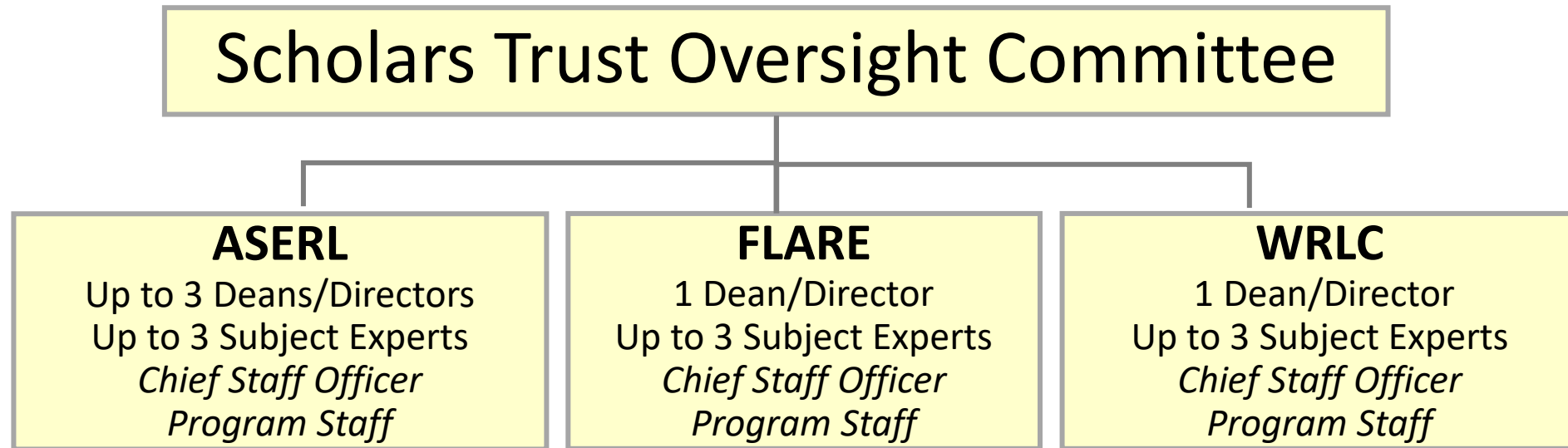
Scholars Trust Governing Council



Scholars Trust Steering Committee



Proposed Governance Structure



Scholars Trust Governance **Structure Comparison**

Current	Proposed
<p data-bbox="122 421 529 471">2-tier Structure</p> <ol data-bbox="122 499 1070 635" style="list-style-type: none"><li data-bbox="122 499 963 556">1. Governing Council (Executive)<li data-bbox="122 578 1070 635">2. Steering Committee (Operational)	<p data-bbox="1225 421 1745 471">Single tier structure</p> <p data-bbox="1225 499 2407 556">Oversight Committee (Executive/Operational)</p>

Scholars Trust Governance **Decision-Making**

Current	Proposed
<ul style="list-style-type: none">● Governing Council: Not defined● Steering Committee:<ul style="list-style-type: none">○ Each consortium shall have one vote. Programs must find consensus within their consortium before casting its vote.○ Any tie votes decided by Chairperson.	<p>Each member program shall have one vote.</p> <p>Program Representatives must find consensus within their consortium before casting its vote.</p>

Scholars Trust Governance **Committee Composition**

Current	Proposed
<ul style="list-style-type: none"> ● Governing Council: <ul style="list-style-type: none"> ○ One dean/director/university librarian for every ten participating libraries in Scholars Trust. Fewer than 10 libraries, has one representative. ○ Non-voting Members <ul style="list-style-type: none"> ▪ Executive Director of each consortium ▪ Chairperson of the Steering Committee ● Steering Committee: <ul style="list-style-type: none"> ○ Each consortium has three representatives <ul style="list-style-type: none"> ▪ two representatives from the participating libraries ▪ one consortium staff person 	<ul style="list-style-type: none"> ● Representatives: <ul style="list-style-type: none"> ○ One dean/director/university librarian for every ten participating libraries in Scholars Trust. Fewer than 10 libraries, has one representative. ○ May have up to 3 subject experts. ● Program Advisors The Chief Staff Officer and a reasonable number of other staff from each member program.

Scholars Trust Governance **Committee Officers**

Current	Proposed
<ul style="list-style-type: none">● Governing Council: Not defined● Steering Committee: Chairperson is elected from one of the participating libraries (is not considered a representative of any consortium)	<ul style="list-style-type: none">● Chairperson: Selected from among the Representatives● Chair-Elect: Selected from among the Representatives

Scholars Trust Governance **Terms of Service/Appointment**

Current	Proposed
<ul style="list-style-type: none">• Governing Council: Not defined• Steering Committee: Not defined	<ul style="list-style-type: none">• Representative: Staggered 3-year term, tenure ending on December 31 of the third year.• Chairperson: One-year term, beginning in January and ending December 31. Selected on a rotating basis at the end of the calendar year, alphabetically by the name of the member program.• Chair-Elect: One-year term, beginning in January and ending December 31. Selected on a rotating basis at the end of the calendar year, alphabetically by the name of the program slated to succeed the sitting Chairperson. <p>Appointment: Representatives are appointed/affirmed by the leadership body of their program.</p>

Scholars Trust Governance **Meetings**

Current	Proposed
<ul style="list-style-type: none">• Governing Council: At a minimum, the committee meets once yearly, and as needed by e-meeting.• Steering Committee: Not defined (generally meets bi-monthly, with two town hall meetings/year)	At a minimum, the committee meets once yearly, and as needed by e-meeting.

Scholars Trust Governance Proposal

Questions/Discussion

Scholars Trust Governance Poll

Do you have any concerns with the proposed governance structure?

OK for this to proceed to the ASERL Board for final approval?

Notes:

- This proposal was unanimously approved by WRLC's Library Directors Council on September 2, 2022
- This proposal will be submitted to the ASERL Board of Directors for review/approval
- Implementation date: **January 2023**



Rosemont Alliance Update

Strategic Directions

Approved January 2022



- **Collection Growth & Security:** Establish milestones for collection growth and retention, including adding new titles and more copies to the collective collection
- **Shared Policies or Guidelines:** Align operational policies for registration of retention commitments, preservation actions, discovery of, and access to shared print journal collections
- **Advocacy & Engagement with Other Programs:** Explore potential partnerships with other organizations and programs in the U.S. and Canada, as well further our close collaboration with the Partnership for Shared Book Collections
- **Infrastructure:** Work with partners across the shared print landscape to support the ongoing development of important infrastructure tools that assist in decision-making for our programs and their participating libraries

- **Last Known Copy Initiative –**

Identified 61,538 titles held across Rosemont Alliance with only one copy

- **39 libraries** (includes the 19 ASERL libraries) agreed to review the last known copy titles identified and to consider making retention commitments

<https://rosemontsharedprintalliance.org/policies-and-procedures>



PARTNERSHIP FOR SHARED BOOK COLLECTIONS

- Participated in **first joint membership meeting** with the [Partnership for Shared Book Collections](#) and the Rosemont Shared Print Alliance (Feb 2022)
 - Established a joint task force to assess future direction of the two programs and make recommendation on merging



Open Mic/Announcements