



Center *for* Research Libraries  
GLOBAL RESOURCES NETWORK

# ASERL CRL Collection Analysis Institution Reports Overview

Presented by Amy Wood  
Head of Technical Services, CRL  
Cheryle Cole-Bennett  
Program Coordinator, ASERL

Friday, October 25, 2019  
2:00pm EDT | 1pm CDT



# Agenda

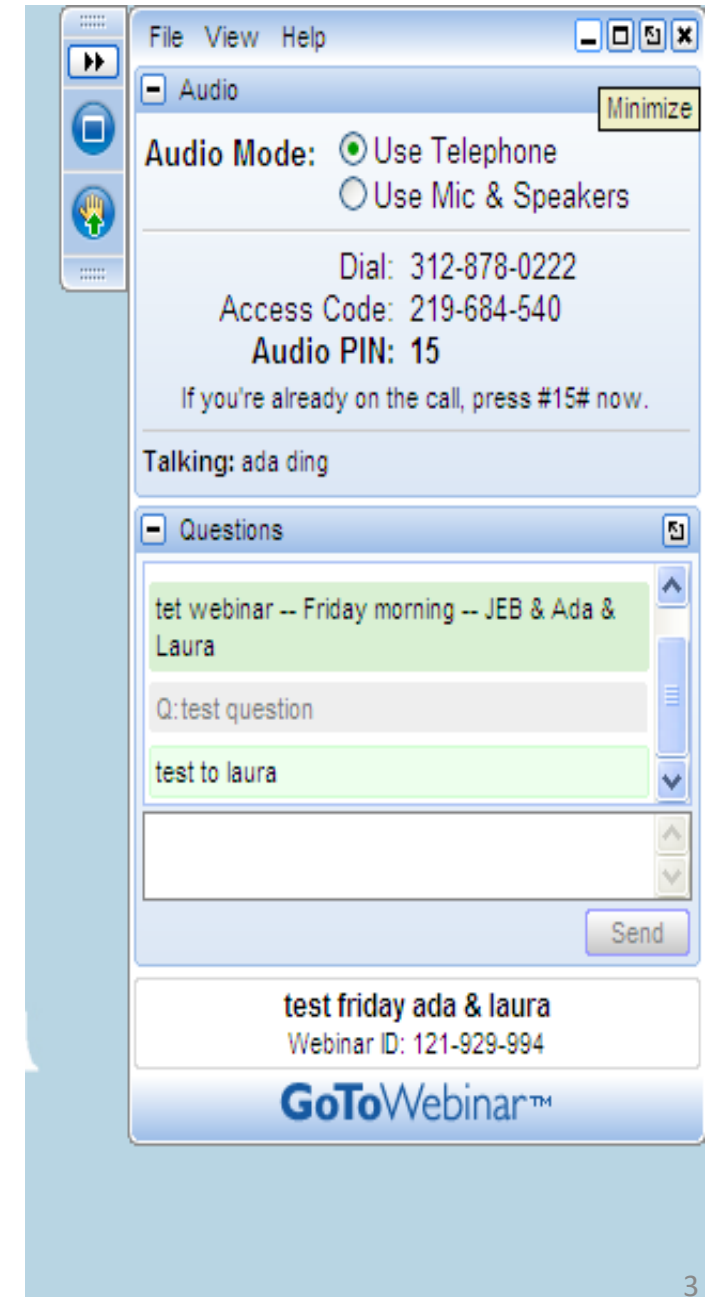
1. Welcome | Session Logistics
2. Project Highlights
3. Questionnaire | Processing Log
4. Institution Report
5. More Data
6. Forthcoming

# USING THE WEBINAR SYSTEM

- **Audio for all participants is automatically muted.**

*You may speak freely with colleagues.*

- **You can ask a question in two ways:**
  - Enter text in “**Questions**” or “**Chat**” boxes
  - **Raise your hand**; moderator will temporarily un-mute your audio connection.



# Project Highlights

# 33 Libraries | 35 OCLC Symbols

1. Auburn Univ.
2. Clemson Univ.
3. Duke Univ.
4. East Carolina Univ.
5. Emory Univ.
6. Florida International Univ.
7. Georgia Tech
8. George Mason Univ.
9. Georgia State Univ.
10. Johns Hopkins Univ.
11. Louisiana State Univ.
12. Mississippi State Univ.
13. NC State Univ.
14. Tulane Univ.
15. U-Alabama
16. U-Central Florida
17. U-Florida
18. U-Georgia
19. U-Kentucky
20. U-Louisville
21. U-Memphis
22. U-Mississippi
23. UNC - Chapel Hill
24. UNC - Charlotte
25. UNC - Greensboro
26. U-South Carolina
27. U-Tennessee
28. U-Virginia
29. Vanderbilt Univ.
30. Virginia Tech
31. Virginia Commonwealth Univ.
32. Wake Forest Univ.
33. William & Mary

**1,009,439 Records Submitted**

Smallest submission – 1,220

Largest submission – 93,161

**TO BE EXCLUDED FROM ANALYSIS:**

Non-print, Non-Serial	monographs- if encoded in the Record monographic series - if encoded in the Record	See Records Data		
Government Documents	Bibliographic Level	Description From local record Leader position 07	Example (space) = (Invalid code) 3 = (Invalid code) 4 = (Invalid code) a = Monographic component part b = Serial component part c = Collection d = Subunit i = Integrating resource m = Monograph/Item s = Serial y = (Invalid code)	Is this a Print Serial Record? Exclude (not a serial) Exclude (not a serial) Exclude (not a serial) Exclude (not a serial) Exclude (not a serial) Exclude (not a serial) Exclude (not a serial) Exclude (not a serial) Exclude (not a serial) Good (serial) Exclude (not a serial)
List of Records I	Serial Type	Description From local record 008 position 21	Example (blank) = None of the following # = (Invalid code) ? = (Invalid code) @ = (Invalid code) 0 = (Invalid code) d = Updating database l = Updating loose-leaf m = Monographic series n = Newspaper p = Periodical w = Updating Web site \ = No attempt to code	Is this a Print Serial Record? Good (serial) Exclude (not a serial) Exclude (not a serial) Exclude (not a serial) Exclude (not a serial) Exclude (not a serial) Exclude (not a serial) Exclude (not a serial) Exclude (not a serial) Exclude (not a serial) Good (serial) Exclude (not a serial) Good (serial)

**292,930 in-scope Titles (833,141 Records)**

1-6 Holders – **263,117 Titles (450,556 Records)**

7+ holders – **29,813 Titles (382,585 Records)**

**169,072 out-of-scope Records**

scope_note	count
Govt pub	121682
Not a journal	1895
Not a serial	24571
Suspected non-print	20924
total	169072

**40,000 Records (~4%) with unidentifiable OCLC #s**



# Questionnaire | Processing Log

## Institution Reports

# More Data

# Collection Analysis Data

**Total Count of Holders**  
participating in this comparison.

**Depth & Completeness of Holdings**  
Calculated by the years in the holdings.

*These can produce false data when there are  
four-digit numbered volumes.*

# Collection Analysis Data

**Count of libraries with existing retention commitments  
in PAPER (July 2019)**

Scholars Trust

Rosemont Shared Print Alliance

Non-Rosemont

# Collection Analysis Data

From the WorldCat Record:

- LC Class
- Country
- Language
- Electronic Versions

# Scholars Trust Retention Model

- The Retention Model represents a series of guidelines to be applied when nominating and selecting titles for retention through 2021. Rosemont Shared Print Alliance holdings are considered when applying the retention guidelines.
- Drafted by the Scholars Trust Steering Committee and approved by the Governing Council in May 2019. Presented to the ASERL Scholars Trust libraries for feedback through August 2019.

Available at: <http://www.aserl.org/programs/j-retain/>

# Forthcoming

Title Nominations Process, Mid-November

ASERL Scholars Trust Retention Database  
Demonstration Webinar

Additional Data Sharing

# Questions?

## Contact

Cheryle Cole-Bennett

Email: [ccole-bennett@aserl.org](mailto:ccole-bennett@aserl.org)

Phone: 470-222-4960